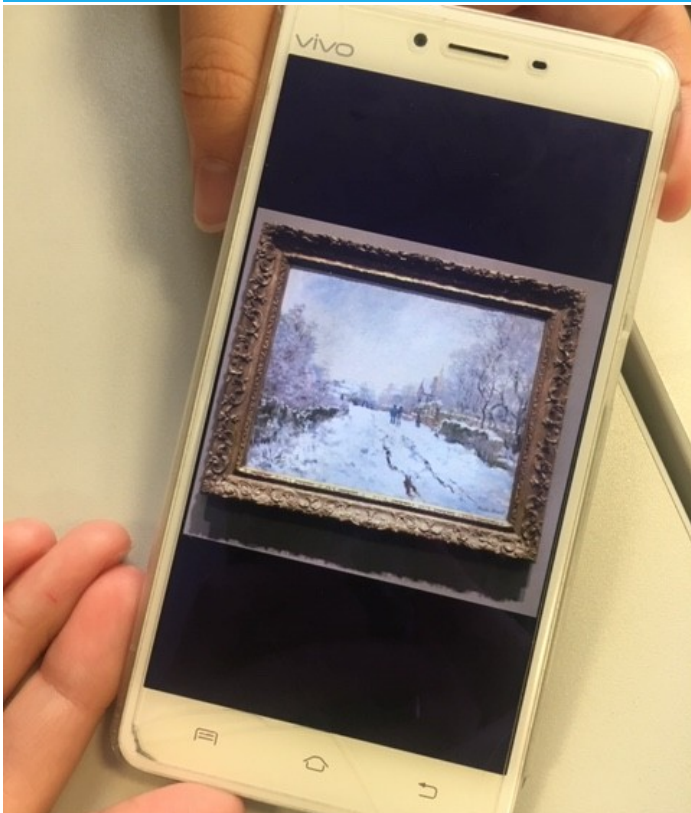




Welcome to our Newsletter!

Contributions from all of you are very welcome. Please speak to your teacher or our Academic Manager Christia if you wish to take part in the next issue. It is a fantastic opportunity to show off your English skills and the experience may enhance your CV.

The National Gallery in London



My cousin and I went to see Van Gogh's *Sunflower*. It's a very famous painting – I never thought I could see it with my own eyes. It's in a plain, wooden frame. It was almost jumping out of the picture frame. The tip of my nose seemed to smell the sweet, cosy fragrance of early morning dew. Bathing in the sun, watching the new sun, it made me feel euphoric.

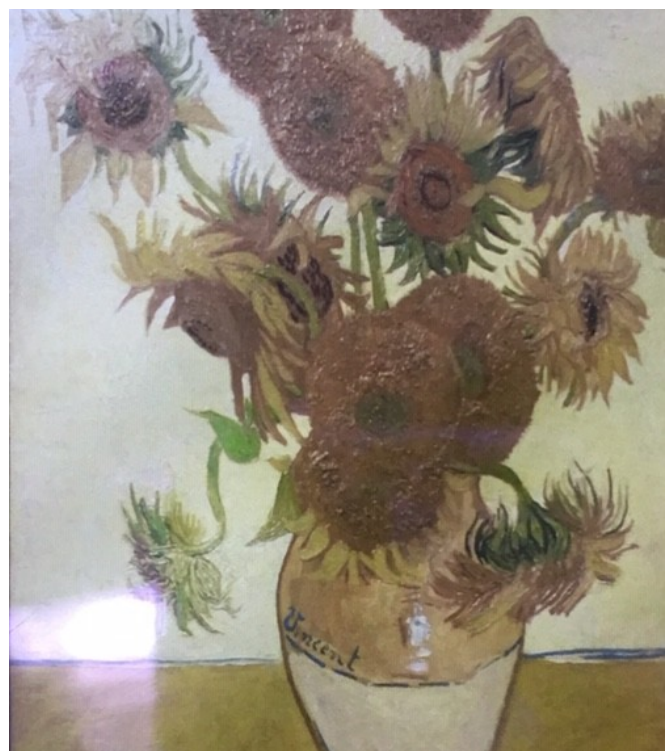
Next, it's my favourite one. It's called *Snow Scene at Argenteuil*. It's Winter and the trees are covered with silver frost. A couple are walking in the snow and holding hands with each other. A little snow is falling on their clothes but they don't feel cold because they have each other. They will hold hands with each other for the rest of life. It's lovely so I like it.

Time flies when you're having fun – I had to wake up from my daydream. It was closing time. I took one last look and let it sink deeply in my mind. Goodbye National Gallery... I'll remember you forever!

By Jing-Lei

I love The National Gallery. I don't know why I want to go to The National Gallery. Maybe because my cousin loves art so she wants to go there. Maybe because there is some famous art. Maybe because I love the peace and quiet. I think all of these are the reasons why I want to go.

When we got up, we went to Tower Bridge, then we went to The National Gallery. It was 4:30pm but the gallery closed at 6:00pm so we needed to hurry up. My mind was so nervous that my heart was beating like a drum. I looked down at the watch on my wrist. It was nearly 5:00pm. Luckily, the metro came and drove quickly so we arrived at the gallery smoothly. When I arrived at the gate, I couldn't help but breathe a sigh of relief. It was just 5:00pm.



Interview

Interview with your Director of Studies, Christia .

Why did you choose to work in the EFL industry?

I had studied languages at University and I wanted to become a teacher after graduation. I took a teaching training course and started teaching English that summer. It was an amazing experience and I found the EFL industry was perfect for me.

What's the best thing about your job?

Ensuring that students and teachers have a fun, meaningful time at school and make the progress they want to.

What were you like in school?

I was a quiet and hard-working student and I did all my homework at lunch so I could spend the afternoons and evenings socialising.

Describe your ideal Sunday morning.

Waking up at 9 o'clock, having tea and pancakes for breakfast, and reading a book in the garden before going to have a Sunday lunch with my family.

What do you like to do outside of work?

I like listening to music and watching live music. I also enjoy hiking, baking, gardening, and reading.

How would your best friend describe you?

Weird.



What would your autobiography be called?

Are you sure you want to read this?

If you could describe Communicate in 3 words, what would they be?

Exciting, vibrant, fun.

For my perfect day I would...

By Hanako

...wake up at 9am – I want to wake up early, then have scrambled egg and coffee for breakfast at 10am.

... walk in the park at 11am, then have steak, bread and wine for lunch with my friend at 12:30.

... have a tea with my friend at 2pm, get home at 5pm and watch TV at 7pm.



By Shabbab

...wake up at 5:30pm, have breakfast at 6:30pm, do different things like watch a film, meet friends and play PS4, then go to bed at 6am.

Getting around Manchester

By Melissa

Getting around Manchester is quite easy thanks to trains, trams, buses and taxis or Ubers. In addition, Manchester isn't a big city so it's very common and simple to get around by bike or on foot.

Trains

The rail network allows you to travel to Greater Manchester and neighbouring towns faster than by car. Ticket prices may vary depending on the destination and if it's a one way or return ticket (approximately £3 to £15). You can buy tickets at train stations, online or by using the Trainline app. The disadvantage of the train is that it's subject to schedules and they aren't as frequent as trams and can sometimes be delayed or cancelled.



Buses

There are many buses running through Manchester, the main bus station is in Piccadilly Gardens. They can be as fast as trams if there isn't too much traffic. But like trains, buses have timetables and they can arrive late. Waiting a long time at the bus stop can be unpleasant, especially when the weather isn't good which is common in Manchester :) Tickets and passes can be bought by cash or sometimes by card when you get on the bus. Prices depend on your destination and the bus company. It will cost you £4.80 for a "Day Rider" ticket with Stagecoach buses. Finally, travelling on the top of a double-decker bus will give you a better view.

Taxis, Cabs and Ubers

They are expensive but more comfortable and safer, mainly when you are travelling late at night. It can be cheaper if you share the fare with the people travelling with you. For taxis, you just tell the driver where you want to go and if he accepts, you get in the car. An Uber fare will cost you slightly less than a taxi fare plus you just need to enter your destination on the Uber app and a driver will be assigned to you. The advantage is that when using this app, you will have a fare estimate before your ride and you can even watch as your driver is en-route to come pick you up.

Trams

No need to worry about a timetable because trams are very regular and frequent, you won't wait for long! The inconvenience of the tram is that it's often full during peak times, so sometimes it's impossible to get on. Ticket prices may seem expensive but they can be used all day (from £1.40 to £7). You can buy tickets from machines at tram stations, online or with the GET ME THERE app. There is a GET ME THERE office in Piccadilly Gardens where you can buy a pass if you take the tram frequently.

Bikes or walking

The healthiest and cheapest way to get around Manchester is by bike or on foot, on top of that it's better for the environment. There are a lot of cycle lanes and the city centre is quite small and easy to explore by just walking around, which would allow you to admire the various architectural styles.



Personally, I prefer to take an Uber but for the well-being of my purse I mostly use the tram.

Student of the Month

Student of the Month for April was Scarlett!

Her teachers said: *“Scarlett has been awarded Student of the Month for all the classic reasons – she has a great attitude, is punctual and always attends classes. She makes the most of her time outside of class too, by always coming to social activities.”*

Well done Scarlett, this is a great achievement! You should be extremely proud of yourself.



Next month's newsletter topic... exploring the UK



Did you spend the weekend in Scotland? Have you visited the beach? Did you take the train to London?

You spend lots of time exploring the UK and we want to hear all about it.

Send your photos to us on WhatsApp (+447482660030) or tag us on Instagram (@communicateschool). You can also write something about your travels. Email your writing or hand it in to reception or your teacher for a chance to see your work in next month's newsletter!

Useful Info



Do you know...



... who to call if you have an emergency and need to contact the school out of hours?	Call our emergency number +44(0)7482660030
... who the First Aiders are in school?	Virginia and Cathy
... where the fire emergency assembly point is?	On the corner of Dale Street and Paton Street
... who to contact when you have a new phone number or new address?	Email your new details to office@communicateschool.co.uk
... who can help you if you need to see a doctor but don't speak good English?	Ask a Student Support Officer to go with you
... who to ask if you want more homework?	Speak to your teacher after class
... who can help you change your timetable?	Academic Manager Christia
... where you can look if you want to practise your reading?	In the library at reception